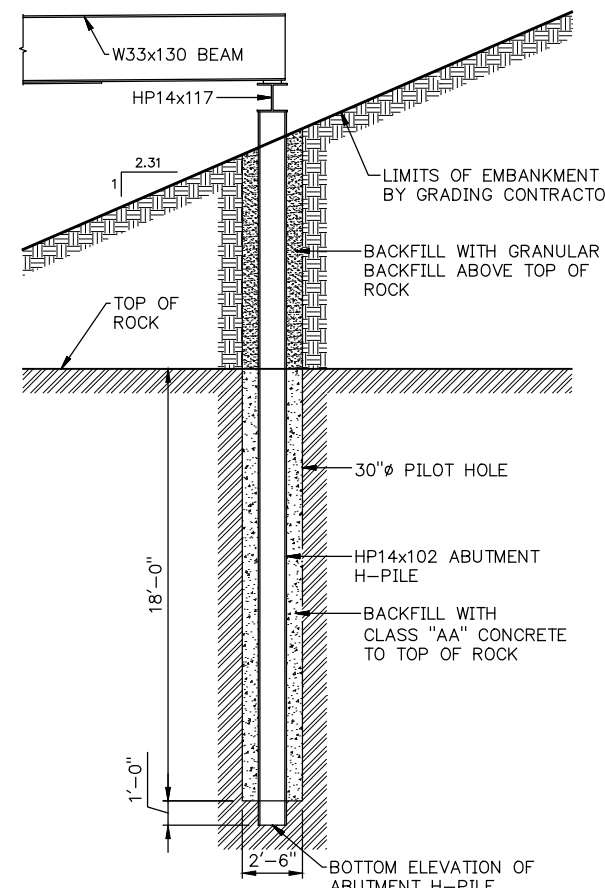
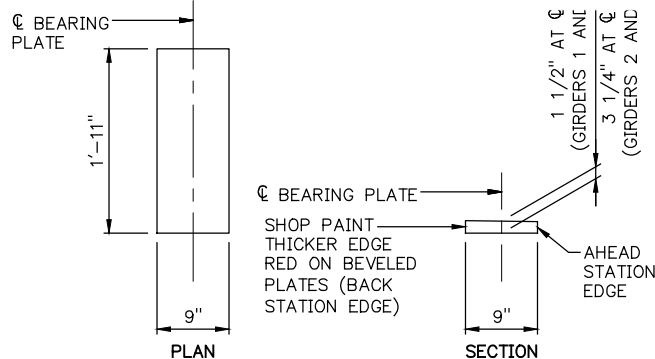


NOTE: BEARING PLATES, ABUTMENT PILE CAP, ABUTMENT PILE CAP STIFFENERS, ABUTMENT H-PILES, C8x11.5 BRACES, AND L4x3x1/4 SHEET PILE CAP SHALL BE COMPOSED OF NEW STRUCTURAL STEEL (GR. 50).

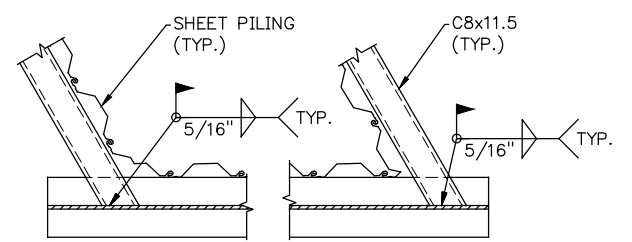


TYPICAL SECTION ABUTMENT PILE WALL DRAINAGE (PERPENDICULAR TO ROADWAY)

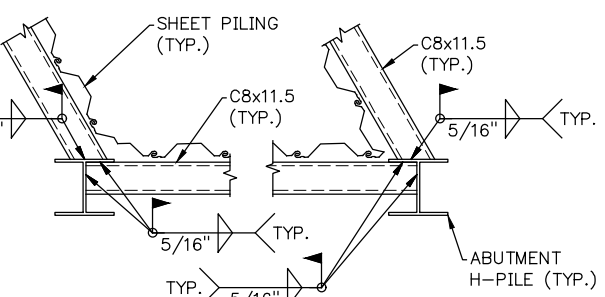


BEARING PLATE DETAILS

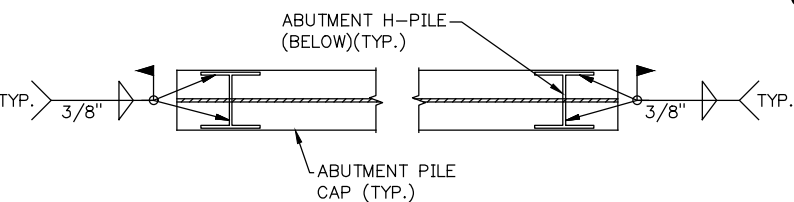
ABUTMENT 1 QUANTITIES		
ITEM	UNITS	TOTAL
SUBSTRUCTURE EXCAVATION COMMON	CY	129.00
GRANULAR BACKFILL	CY	13.00
STRUCTURAL STEEL	LB	6,500.00
CLASS AA CONCRETE	CY	23.80
CLASS C CONCRETE	CY	1.00
PILES, FURNISHED (HP14x102)	LF	270.00
PILES, DRIVEN (HP14x102)	LF	9.00
SHEET PILING, FURNISHED	SY	68.00
SHEET PILING, DRIVEN	SY	68.00
(PL) PILOT HOLES	LF	247.00
6" PERFORATED PIPE UNDERDRAIN ROUND	LF	38.00
6" NON-PERF. PIPE UNDERDRAIN RND.	LF	3.00
STANDARD BEDDING MATERIAL, CLASS B	CY	63.00



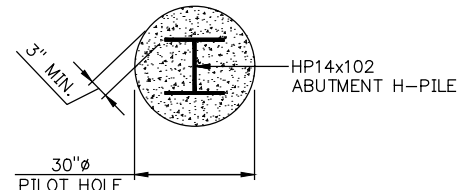
MIDDLE HORIZONTAL BRACE CONNECTION TO PILE CAP



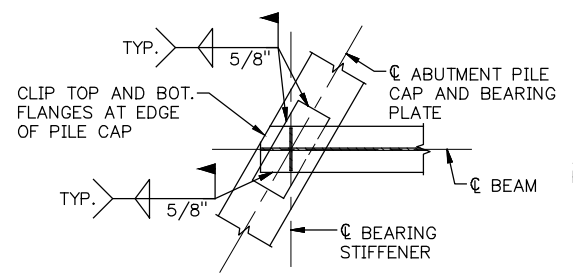
MIDDLE HORIZONTAL BRACE CONNECTION TO ABUTMENT PILE



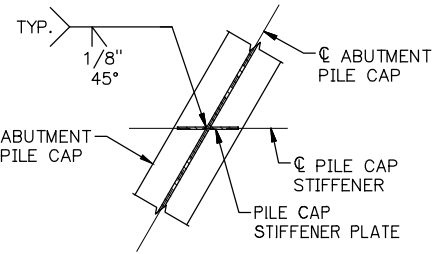
ABUTMENT PILE TO PILE CAP WELD DETAIL



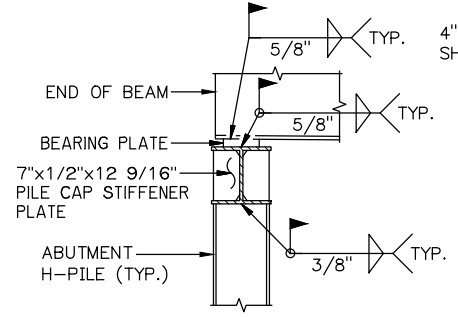
ABUTMENT PILE PILOT HOLE BACKFILL



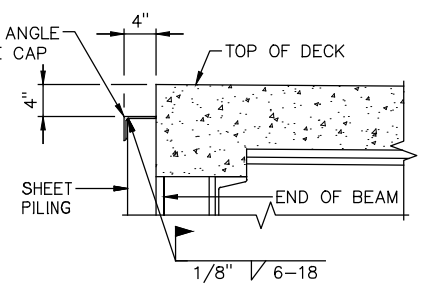
SECTION A-A



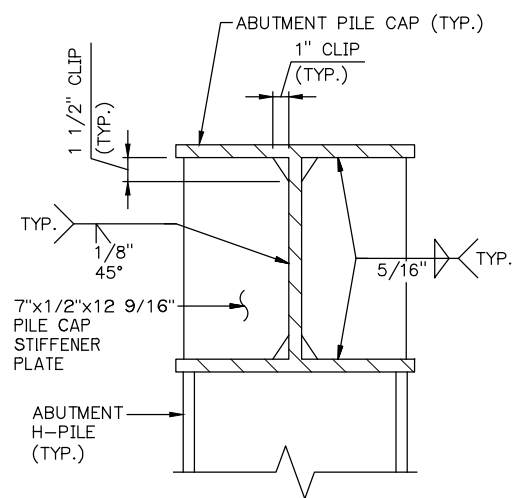
SECTION B-B



SECTION C-C



SECTION D-D



ABUTMENT PILE CAP STIFFENER DETAIL

ABUTMENT 1 DETAILS (BRIDGE "B")
 © SURVEY STA. 314+58.28
 State Job No. 28312(04) Sheet No. 30

LOGAN COUNTY S.H. 74D